



09系列二位三通膜片阀 09 Series 2/2 way Membrane Valve



二位三通电控换向阀是现代工业管道中的开关元件，利用电磁力的作用来实现的开关动作。介质使用前须经除尘过滤后方可使用。
2/2way elec-control shuttle valve is the switch component in modern industry, it utilizes the electromagnetic reaction to realize the on/off movement. The medium is only can be used after dedusting and filtering.

订购码 Ordering code

09

规格代码
09 系列气动膜片阀
Specification code
09 series

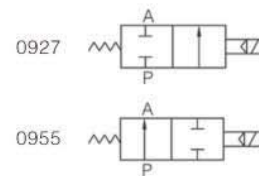
□

控制方式
'27'表示常闭
'55'表示常通
Control methods
'27': constant closing
'55': constant opening

□

公称通径
Nominal diameter

符号
Symbol



规格 Specifications

参数 Parameter	订购码 Ordering code	0927000.0201 0955105.0201	0927100.0201 0955205.0201	0927200.0201 0955305.0201	0927300.0201 0955405.0201	0927400.0201 0955505.0201	0927500.0201 0955605.0201	0927600.0201 0955705.0201	0927700.0201 0955805.0201
公称通径 mm Nominal diameter		8	10	12	20	25	32	40	50
工作压力范围 Mpa Working pressure range		0.07~1.6					0.1~1.6		
环境温度 °C Ambient temperature		-10~55							
介质温度 °C Fluid temperature		-5~50							
有效截面积 mm² Net sectional area		20	40	46	110	190	300	400	650
电源电压 V Power consumption		AC:220,110				DC:24			

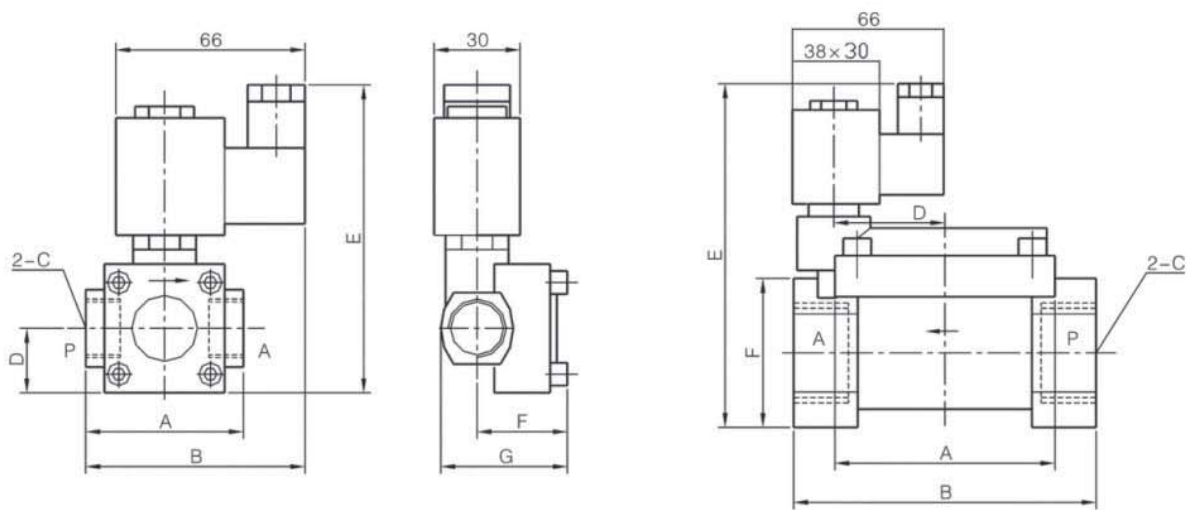
尺寸 Dimensions

0927系列 (series) 1

0955系列 (series) 1

0927系列 (series) 2

0955系列 (series) 2



0927	型号 Model	接管口径 Port size	A	B	D	E	F	G						
系列1 series1	0927000	G1/4'	55	76.5	22.5	107.5	31.5	48						
	0927100	G3/8'												
	0927200	G1/2'	88	92	20	121	45	67						
	0927300	G3/4'												
	0927400	G1'												
系列2 series2	0927500	G1/4'	96	132	48.2	150	65	-						
	0927600	G1/2'	112	163	57	168	80	-						
	0927700	G2'												
0927	0955105	G1/4'	55	76.5	22.5	113	31.5	48						
系列1 series1	0955205	G3/8'												
	0955305	G1/2'							88	92	20	130	45	57
	0955405	G3/4'												
	0955505	G1'												
系列2 series2	0955605	G1/4'	96	132	48.5	157	65	-						
	0925505	G1/2'	112	163	57	178	80	-						
	0955805	G2'												